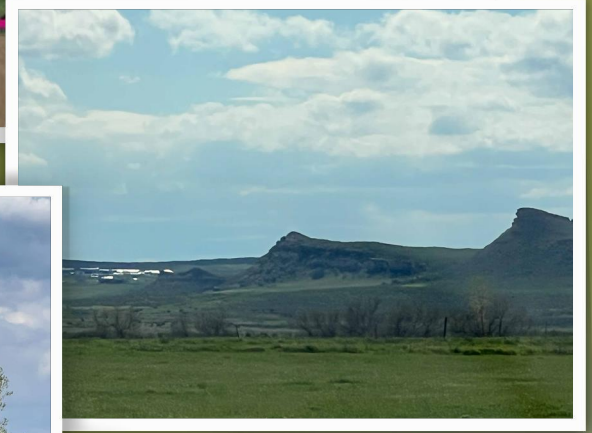
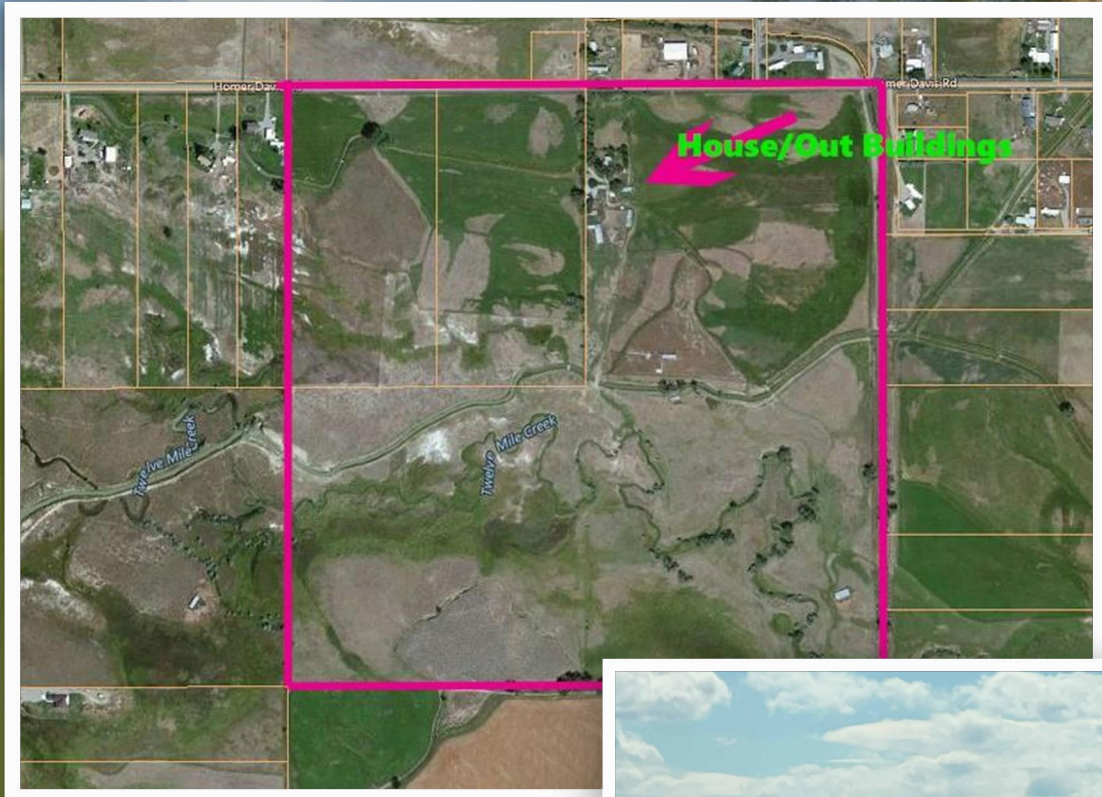


3608 Homer Davis ROAD, Shepherd, MT 59079

Total acreage is 158.755. There are 3 separate legal parcels - a 20.08 ac, 20.09 ac and 118.585 ac parcel. The existing home has been lived in up until now, but needs plenty of TLC. There is one large wooden shed/barn/shop, 2 loafing sheds and cattle working area - all older. There are heated livestock waterers in 2 corrals. Combination of irrigated, sub irrigated and creek frontage property. DEVELOPMENT PARCEL! .6 mile from Eagle Ridge Golf Course! Possibility of high demand Ranchette horse properties or 1 - 2 ac homesites. Ask agent for details! Info per county records/owner. Buyer to verify.

3608 Homer Davis ROAD Shepherd, MT 59079



\$2,000,000
4 Beds, 2 Baths

Pat Schindele
Keller Williams Yellowstone Properties
406-591-2551
pat@patschindele.com
<http://agent-135484.pages.tourfactory.com>



MLS #: 329825



EQUAL HOUSING OPPORTUNITY
Information supplied by sellers. Deemed reliable but not guaranteed.

See the Virtual Tour! www.tourfactory.com/2994018



Pat Schindele
 Keller Williams Yellowstone Properties
406-591-2551
 pat@patschindele.com
<http://agent-135484.pages.tourfactory.com>

kw YELLOWSTONE
 PROPERTIES
 KELLERWILLIAMS.

VIEW
 -THE-
 TOUR

